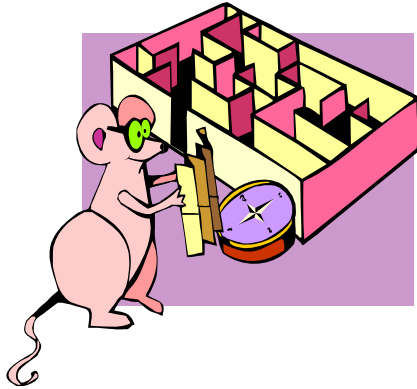


AP PSYCHOLOGY SUMMER ASSIGNMENT

2009



Due Dates:

****The School calendar for A/B Day is not published this early. Therefore, your assignment will be due the second day of class which is either:**

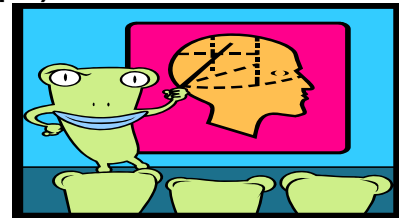
8/27 Thursday

or

8/28 Friday

MATERIALS NEEDED TO COMPLETE SUMMER ASSIGNMENT:

- AP SUMMER READING PACKET BY ZIMBARDO (PICK UP AT D204 OR D206); During the summer guidance will also have available packets.
- AP BARRON'S BOOK: HOW TO PREPARE FOR THE AP PSYCHOLOGY ADVANCE PLACEMENT EXAM (third or most current addition) (YOU CAN PURCHASE THIS AT ANY BOOK STORE, AMAZON.COM, WAL-MART.COM, BARNES AND NOBLE BOOK STORE, for example)



TASK ONE:

1. You will READ Chapter One and Two for your summer assignment. Chapters One and Two are xeroxed and attached; please bring this copy back with you with no highlighting or writing on it.
2. At the top of the page type your name and "AP Psychology Summer Assignment." Do not write your name on the xeroxed copy.
3. In addition, you will receive 5 extra credit points for the following tasks:
 - On the front page type your e-mail and your parents e-mail.
 - Turn the AP Zimbardo reading packet (Chapters One and Two) with your assignment on the second day of class.

4. Any questions, please email over the summer either Mrs. Krissoff at ekrissoff@aacps.org or Mrs. Keller @ tkeller@aacps.org

TASK TWO: The project is worth 40 possible points. The summer assignment and packet are due the second day of class. There will be 10 points deducted for each day the project is late.

Chapter 1: Part 1: Identify and explain Perspectives Psychologists Use Today:

1. Biological View
2. Developmental View
3. Cognitive View
4. Psychodynamic View
5. Humanistic View
6. Behavioral View
7. Socialcultural View
8. Evolutionary/Sociobiological View
9. Trait View

Part 2: You will give a Definition, Example and Association for each of the words below. Use the example below or points will be deducted:

1. **Word:** id -

Definition: id – the primitive, unconscious portion of personality that houses basic drives and repress memories (this would be the definition)

Example: It functions like a child that wants gratification right now.

Association words – Freud, impulsive (the association words will help you if you have trouble understanding the questions on the AP Test)

Psychological Terminology (Chapters 1 & 2)

- | | |
|----------------------------|------------------------------|
| 1. representative sample | 21. ex post facto |
| 2. empirical approach | 22. correlation study |
| 3. inferential statistics | 23. survey |
| 4. confirmation bias | 24. naturalistic observation |
| 5. structuralism | 25. longitudinal study |
| 6. introspection | 26. cross-sectional study |
| 7. functionalism | 27. cohort-sequential study |
| 8. gestalt psychology | 28. personal bias |
| 9. scientific method | 29. expectancy bias |
| 10. theory | 30. double blind study |
| 11. hypothesis | 31. histogram |
| 12. operational definition | 32. frequency distribution |
| 13. random presentation | 33. descriptive statistics |
| 14. random sampling | 34. mean |
| 15. dependent variable | 35. median |
| 16. replicate | 36. mode |
| 17. experiment | 37. range |
| 18. controls | 38. standard deviation |
| 19. random assignment | 39. normal distribution |
| 20. confounding variables | 40. correlation coefficient |

Part 3: Identify and explain Psychology's Sub Fields

1. Forensic Psychologist
2. Counseling Psychologists
3. School Psychologists
4. Educational Psychologists
5. Developmental Psychologists
6. Clinical Psychologists
7. Social Psychologists
8. Experimental Psychologists
9. Industrial & Organizational
10. Consumer Psychologists

HELPFUL WEBSITES

Start at Psychology/Careers for the Twenty-First Century Web site.

<http://www.apa.org/publications/brochures.html><http://www.apa.org/publications/brochures.html>

<http://www.alleydog.com>

<http://www.psychologymatters.org/glossary.html>

<http://www.ryerson.ca/~glassman/approach.html>